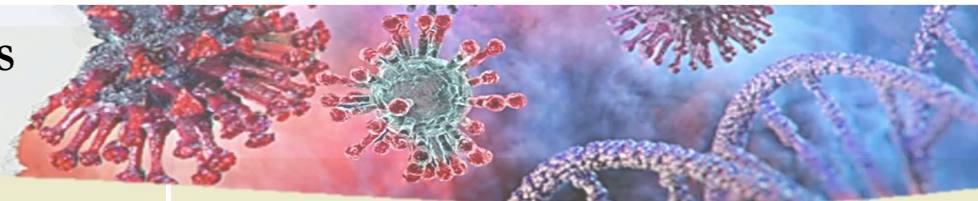




UPDATE ON CORONAVIRUS (COVID-19) JUNE 2020



Summary of Coronavirus outbreaks

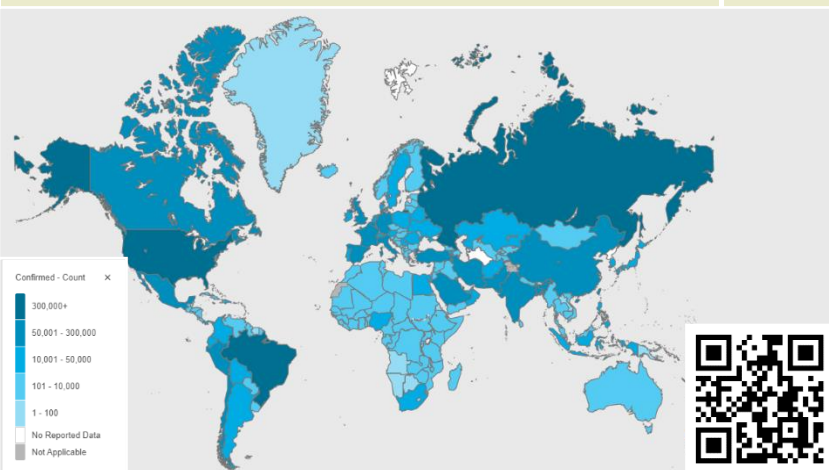
On May 18th and 19th 2020, the World Health Assembly (WHA) met virtually with a reduced agenda and a main focus on “COVID-19”. One of the topics addressed in the agenda was global solidarity, information sharing, collective responsibility, accountability and raising the importance of Universal Health Coverage. In this WHA, a historic resolution was adopted to bring the world together to combat the COVID-19 pandemic. This resolution was co-sponsored by more than 130 countries, with the main focus on vaccine development and distribution, but also to provide a clear path for managing the COVID-19 crisis.

According to the World Health Organisation (WHO) statistics, as of 17th June, there were **8,184,331** confirmed cases and **443,960** deaths by COVID-19 in **216** countries. Out of the infected people, over **3,966,877** million had already recovered.

Currently the American continent is the most affected by COVID-19. The number of confirmed cases exceeds **4 million**, with the United States (**2,137,731**) and Brazil (**923,189**) standing out with the highest number of confirmed cases.

In the last two months, the number of confirmed COVID-19 cases in Russia have increased exponentially. Russia is one of the most affected in Asia.

In terms of registered deaths, the United States still has the highest number of deaths (**116,963**) followed by the Brazil with (**45,241**)



COVID-19 in Africa

All the countries in Africa have been affected by the COVID-19 pandemic, with the caseload and mortality rising in the past month.

According to statistics by World Health Organization Africa Region, as of **17th June 2020**, a cumulative total of **256,000** confirmed COVID-19 cases with **6,800** deaths were reported. The most affected countries are: South Africa with (76,334cases), Egypt (47,856 cases), Nigeria (17,148cases), Ghana (12,193 Cases) Algeria (11,147cases) and Morocco (8,985cases).

In East Africa, the DR. Congo (5,100) and Kenya (3,860) had recorded the highest number of confirmed COVID-19 cases followed by South Sudan (1,776), Rwanda (636) and Tanzania (509),.

COVID-19 outbreak in Uganda

As of 17th June 2020, Uganda had recorded **732** confirmed cases in 40 districts. Of the total confirmed cases, only **373** were active cases and **409** recovered with no deaths so far. **1,727** people are in institutional quarantine, while **1,272** contacts are being followed.

Border districts have registered the highest number of positive cases, mainly those with major points of entry such as Amuru- 231, Tororo-137, Busia-26, Rakai-132 and Kyotera 42.

The government committed to provide masks to all citizens and the process is ongoing

The Ministry of Health in collaboration with sister ministries, agencies and departments and districts continue to strengthen the COVID-19 outbreak response mechanisms.

In the Uganda Gazette No. 29, Volume CXIII, dated 8th May, 2020, a regulation was published, measures were released and wearing masks in public became mandatory.

This came in as a strategy by government to protect its people against spread of COVID-19 as it eased lockdown. Distribution of face masks at border districts is underway

The public is advised to remain vigilant and calm but refrain from spreading false rumours. In case of an alert or suspected case, report to the nearest health facility or call our toll-free lines 0800100066 or 0800-203-033 or the following officers- Mr. Atek Kagirita on 0782 909 153 or Dr Allan Muruta on 0772 460 29.

Source: World Health Organization. <https://who.sprinklr.com/>



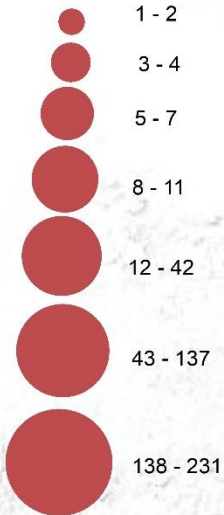
U - NEWS

Uganda National Integrated Early Warning System – Monthly Bulletin

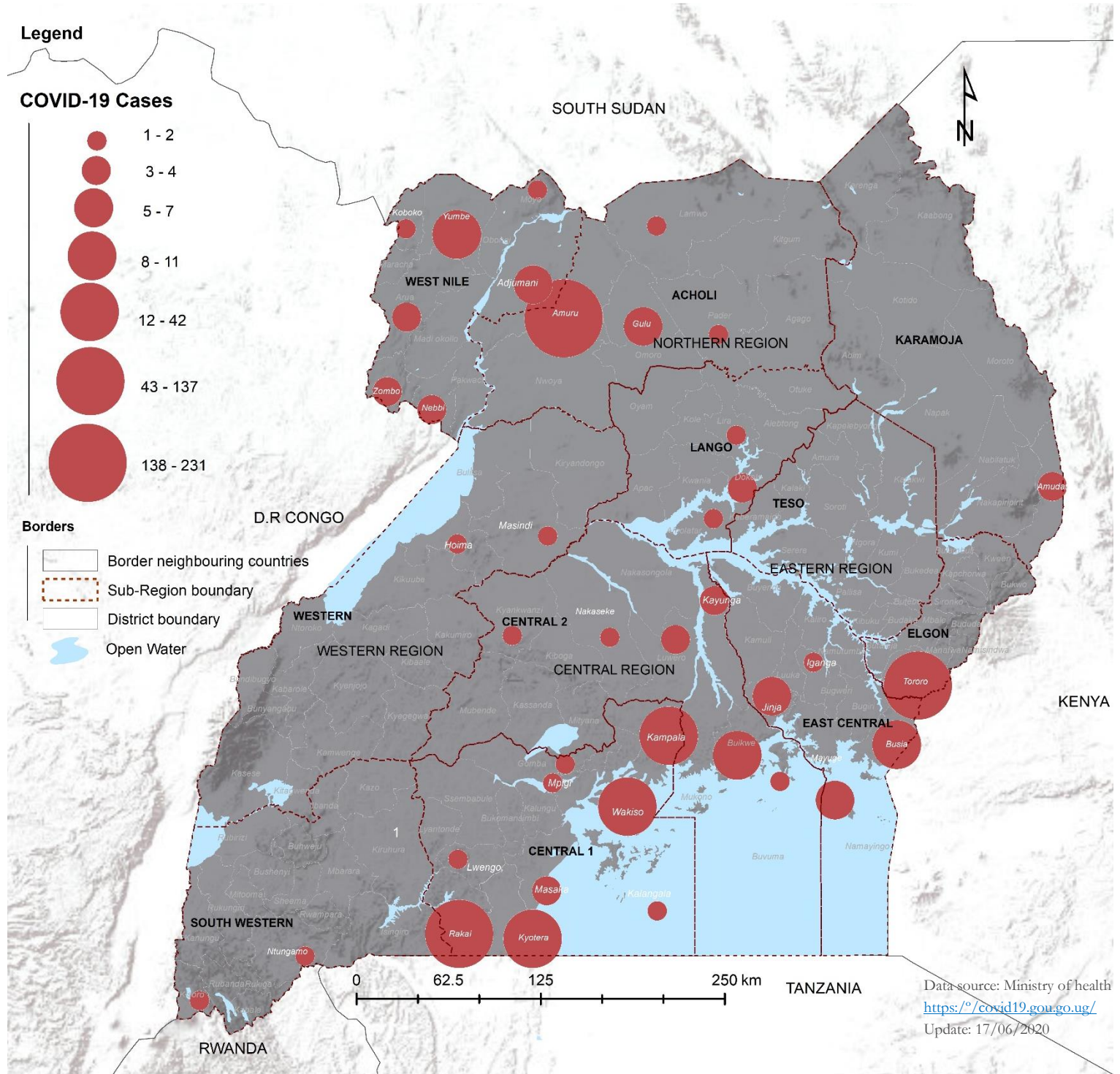
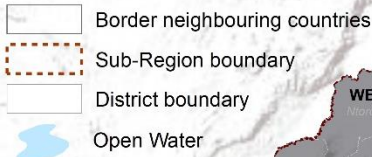
CURRENT STATISTICS COVID-19 -UGANDA

Legend

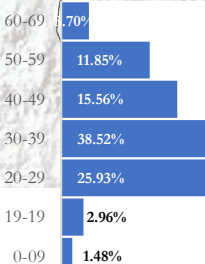
COVID-19 Cases



Borders



Data source: Ministry of health
<https://covid19.gou.go.ug/>
 Update: 17/06/2020



732
Confirmed

0
Deaths

1,272
Followed up

409
Recovered

1,727
Under institutional quarantine



U – NEWS

Uganda National Integrated Early Warning System – Monthly Bulletin

HYDROMETEOROLOGICAL AND GEOPHYSICAL DISASTER'S IMPACT JANUARY TO MAY 2020

Amidst COVID-19 crisis, hydro-meteorological and geological hazards have continued to cause damage, disruption and losses in Uganda.

According to OPM (Department of Relief, Disaster Preparedness and Management) and Partners statistics, since January until May 2020 over 66 Districts have reported flash floods, landslides, hailstorms, rising water levels in lakes like Victoria, Albert and Kyoga, and other water bodies. A total of 48 districts have recorded flash floods and flooding due to significant rise of lake water levels affecting approximately 175,850 people with at least 28 death, and 96 injuries. Over 3,972 houses have been fully destroyed by the floods and 4,079 individuals affected, displacing about 28,628 people.

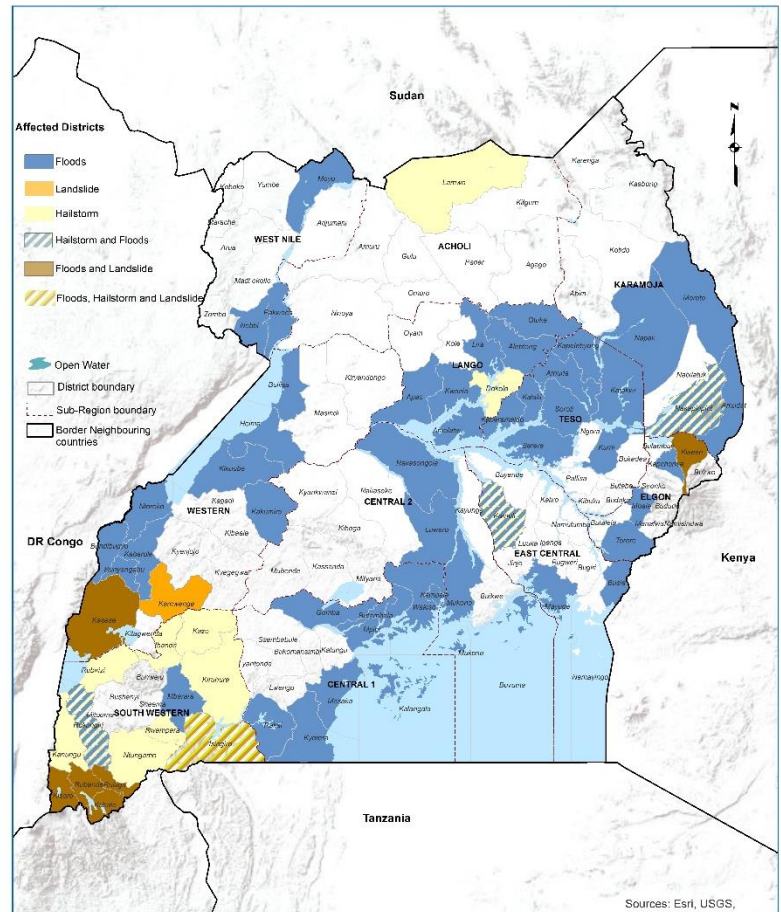
Analysed data from preliminary reports also show that 14 districts reported a combination of hydrometeorological (flood, hailstorm) and geophysical (landslide) hazards. The impact of these disasters affected approximately 340,716 people, of which 51,592 people were displaced, 15 deaths and 164 injuries were reported. Isingiro district was impacted by the three disasters; floods, landslides and hailstorm that affected about 16,090 persons.

Damage to critical infrastructures such as schools, health and WASH facilities were reported. 13 schools, three (3) health facilities, over 60 WASH facilities and over 24 Agri-infrastructures facilities were partially damaged, while 12 schools and 27 health facility structures were fully destroyed by disasters.

The recent floods of May 2020 left Kasese district in a state of despair. The Office of the Prime Minister and its partners namely: Uganda Red Cross Society, Ministry of Health, Kagando Hospital, KIMA Foods, Malteser International, CAFOMI, CHALAPI, UWA, Save the Children, Oxfam, CRS, Fura, St. Johns Ambulance, RWEFRA, UNICEF, South Rwenzori Diocese, Inter- Religious Council, Living Water, Life Water, ECOTRUST, Fascinating Women of Valour and TIBET HIMA, Kasese Rwenzori United Developers Association; and individual volunteers such as H.E. The Ambassador of China, Chrispus Kiyonga, Hon. Beatrice Anywar, Hon. Ntabosi Gideon and Hon Sarah Mutuzo contributed relief items in response to the disaster. The items included; shelter, food, WASH items to mention but a few.



Districts affected by Disasters (January to May)



Data Source:
Disasters (Jan - May): OPM and Partners

Map Projection
GCS_WGS_1984
WKID: 4326
Authority: EPSG
Angular: Unit: Degree [0 0] 145.20051194450;
Prime Meridian: Greenwich GCR;
Datum: WGS_1984
Spheroid: WGS_1984
Semi major Axis: 6378137.0
Semi minor Axis: 6356752.314245179
Inverse Flattening: 298.257223563

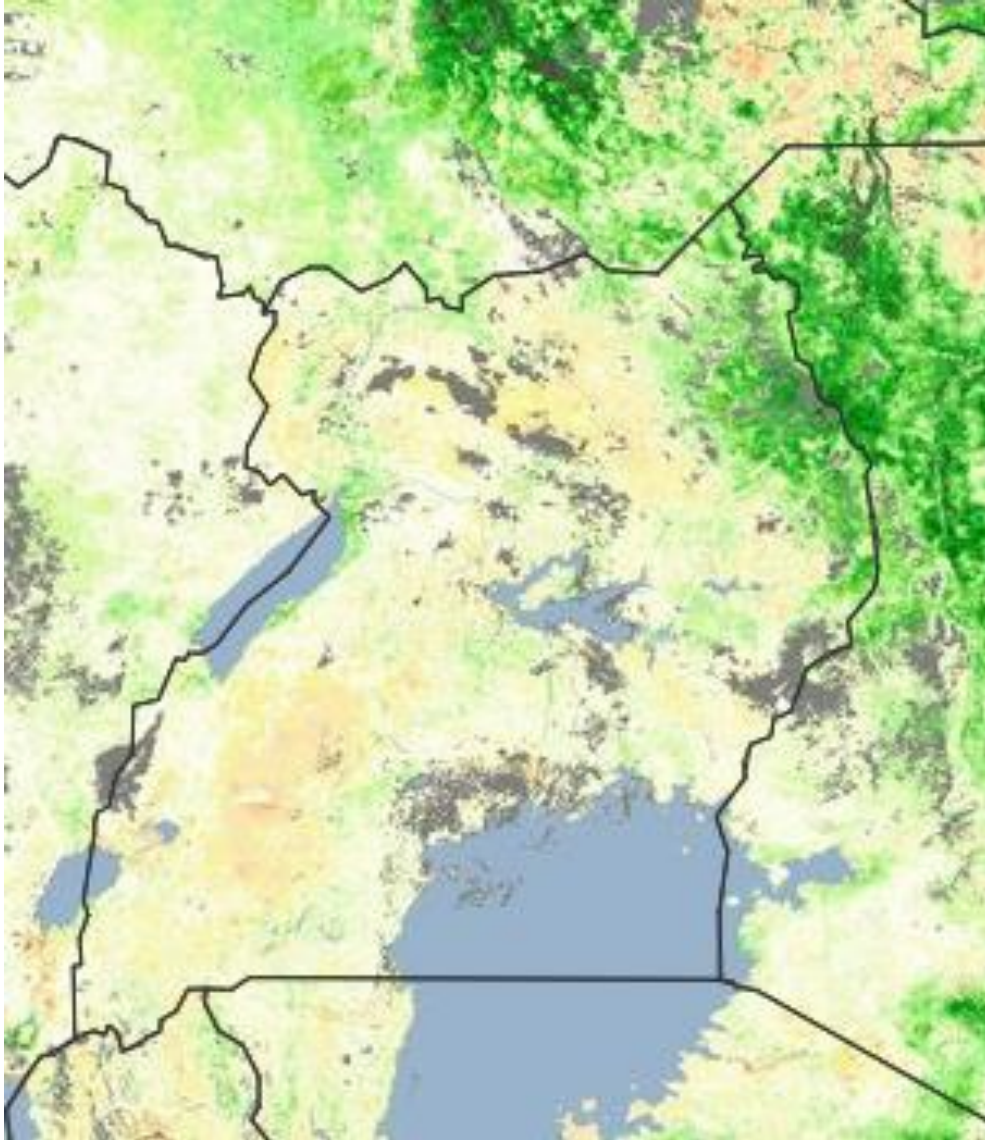




U - NEWS

The Official Government of Uganda Inter- Ministerial/Agencies
Monthly National Integrated Multi-Hazard Early Warning Bulletin

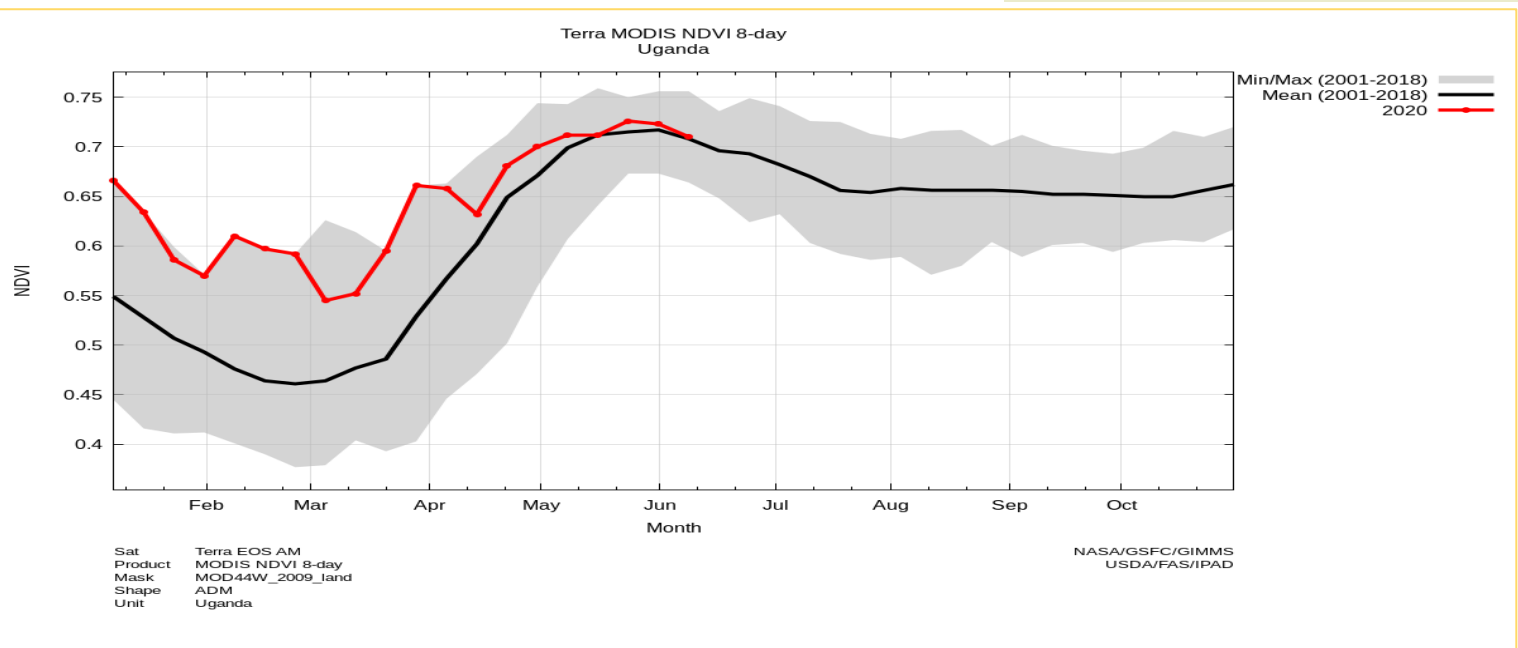
HIGHLIGHTS—NDVI ANOMALY (JUNE 30th TO 05th JULY 2020)



The figure beside represents the Normalized Different Vegetation Index (NDVI%) anomaly for the period of 01st June to 8th June 2020

The green color represents areas where conditions are “above normal.” The light green color represents areas where conditions are better than “normal”. The yellowish-brown areas represent areas where the vegetation conditions are near normal. Gray areas are those where no data was collected due to cloud cover.

The chart below complements the data represented on the map showing the current vegetation conditions. The red line represents the average conditions and compares with the average conditions (black line) for the same period. The grey area shows how values tend to spread from the mean (min/max). For the country as a whole, current conditions were aligned with the long-term maximum deviation from the above-average.





U - NEWS

Uganda National Integrated Early Warning System – Monthly Bulletin

JUNE TO JULY 2020 SEASONAL RAINFALL OUTLOOK OVER UGANDA

Western Region

Central Western: (Bundibugyo, Ntoroko, Kabarole, Kyenjojo, Kyegegwa, Kamwenge, Masindi, Bulisa, Hoima, Kakumiro, Kagadi, Kikube and Kibaale) districts. Near average rainfall is expected.

South Western: (Kisoro, Kabale, Rubanda, Rukiga, Rukungiri, Kanungu, Ntungamo, Rwampara, Kazo, Mbarara, Kirubura, Isingiro, Ibanda, Busbanyi, Buhweju, Mitooma, Sheema, Rubirizi, Kitagvenda and Kasese) districts. Near average with a tendency to below normal rainfall is expected.

Lake Victoria Basin and Central Region

Northern and Southern parts of Central: (Nakasongola, Luwero, Nakaseke, Kyankwanzi, Kiboga, Mubende, Kasanda, Sembabule, Lwengo, Lyantonde, and Rakai) districts. Near normal (close to average) rainfall over most parts of the region is expected.

Eastern parts of Central: (Mukono, Buikwe, Kayunga, Buvuma) districts. Near average rainfall conditions with a slight tendency to above normal rainfall are expected.

Central and Western Lake Victoria Basin: (Kalangala, Kampala, Wakiso, Masaka, Mpigi, Butambala, Kalungu, Bukomansimbi, Gomba, and Mityana) districts. Near average rainfall with a slight tendency to above normal rainfall is expected.

Eastern Lake Victoria Basin: (Jinja, Bugiri, Busia, Mayuge, Namayingo and Tororo) districts. Near average rainfall with a tendency to above average is expected.

Eastern Region

South Eastern: (Kamuli, Iganga, Luuka, Namutumba, Buvende, Kaliro, and butaleja) districts. Are expected average rainfall with a tendency to above normal average.

North Eastern: (Amuria, Katakwi, Nabilatuk, Karenga, Moroto, Kotido, Nakapiripirit, Abim, Napak, Amudat, and Kaabong) districts. Near average with a tendency to above normal rainfall conditions are expected.

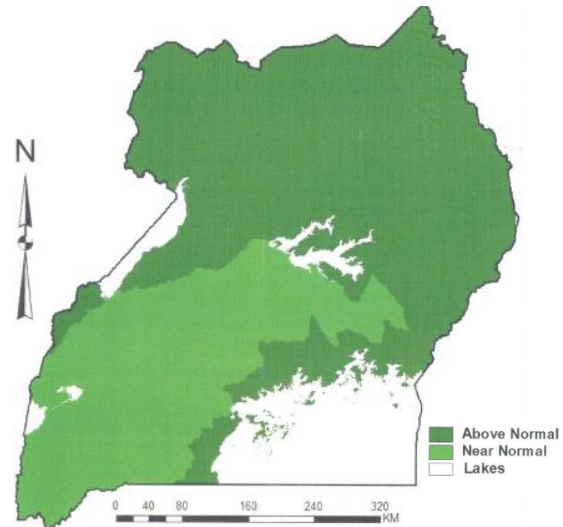
Northern Region

North Western: (Moyo, Yumbe, Adjumani, Arua, Maracha, Zombo, Nebbi, Madi-Okolo, Obongi, Pakwach, Koboko) districts. Near normal with a tendency to above average rainfall conditions are expected

Eastern Northern Parts: (Lira, Kitgum, Agago, Lamwo, Otuke, Pader, Alebtong, Kole, and Dokolo) districts. Near average with a tendency to above normal rainfall conditions are expected.

Eastern Northern Parts: (Lira, Kitgum, Agago, Lamwo, Otuke, Pader, Alebtong, Kole, and Dokolo) districts. Near average with a tendency to above normal rainfall are expected (high chances)

Central Northern Parts: (Gulu, Apac, Pader, Nwoya, Amuru, Oyam and Kiryangongo) districts. Near average with a tendency to above average rainfall are expected.



SEASONAL RAINFALL OUTLOOK (JUNE 2020) OVER UGANDA

Lifesaving: Floods, Landslides, Storm-winds and Lightening Disaster Alert

Since January, the country has experienced continuous rainfall causing flooding and landslides in some parts of the country. Areas around the shores of L. Victoria, Albert, Kyoga and Edward have been submerged, leaving many households displaced. Other areas downstream have been affected by the rising water levels.

The General Public is informed that the rains will continue to be heavy and above normal in several parts of the country.

Floods and landslides are expected in Elgon, Rwenzori and Kigezi Sub regions.

Many parts of the country will experience strong winds and lightning; fishermen, especially on Lake Victoria, should adhere to safety and lifesaving measures.

People should not be caught unprepared!

Those living near river banks and on steep slopes should shift to homes of relatives and friends in safer locations | People should clear drainage channels near their homes and workplaces | People should reinforce their roofs and walls where necessary | People are strongly advised not to walk or to allow a driver or boda-boda-rider take them through flooded road sections or bridges even if when the floods appear very low below the knees or rim of the vehicle. | Store enough food and firewood to last three months | Take extra care of children, the elderly and other vulnerable persons during the next three months| We advise people who live in areas at high risk of landslides to move to a host family in safe areas.

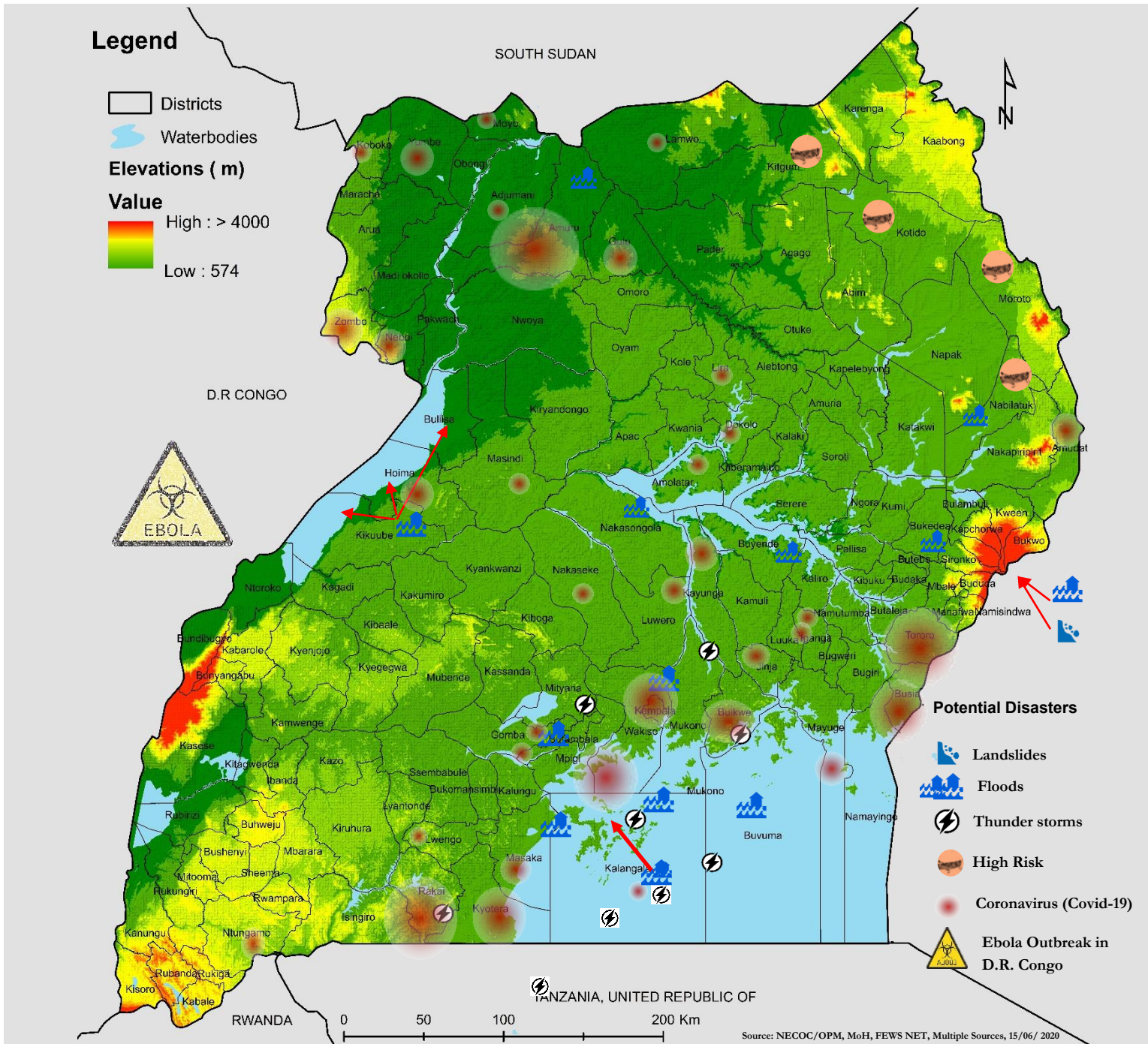
Desilt drainage systems especially in urban areas | Dig/ Open drainage channels around households and gardens | People in flood prone areas are advised to move from low lying areas to high lying places towards peak of the rains | Sensitize the public to use rubber shoes/materials during rains | Early prepositioning of seed and other agro/livestock-inputs in/or near agricultural areas | Activate and or establish disaster management committees at the local levels. | Monitor signs of landslides like cracks, saturated soils, leaning trees, and report to the Authorities | Install lightning arrestors in public premises such as schools, churches, hospitals | Avoid standing in open space especially during heavy rains | Avoid areas with tall unsafe structures like those under construction and standing under the trees. | Avoid using phones during rain | Emergency rescue teams should carry out surveillance.



U - NIEWS

Uganda National Integrated Early Warning System – Monthly Bulletin

MULTI-HAZARD EARLY WARNING PROBABILITY MAP – JUNE/JULY 2020



Early Warning for Hydro-Meteorological and Geophysical disasters Warning!

- According to Seasonal Rainfall Outlook June to August (JJA) 2020, increased likelihood of normal to above normal rainfall (enhanced rainfall) conditions over the northern, north-eastern and in most of the areas in the eastern region has been predicted. Flash floods are expected in Teso, Elegu border in Amuru district, Karamoja subregion and mudslides over Elgon subregion.
- Disaster Management Committees (DDMC), are advised to update their contingency plans, and be vigilant.

Biological disaster Warning!

- Some standard operating procedures have already been set amidst the continued increasing number of COVID-19 confirmed cases in the country. For example, the use face masks in public space has become mandatory to all people in Uganda. The public has also been urged to keep social distance and respect all rules issued by the Ministry of Health.
- Neighboring countries such as D.R. Congo is experiencing Ebola **outbreak**. As of 31 May 2020, 3195 cases have been reported, including 72 deaths. Border district are advice to strengthen health surveillance near their border areas.
- According to FAO situational report update, the most recent Desert Locust sighting was in Moroto district on 20th May 2020 with no damage cases reported. According to Desert Locust Movement Prediction for June by IGAD, Kitgum, Moroto, Kotido and Nakapiripirit were considered highest risk areas for desert locust invasion.



U - NEWS

Uganda National Integrated Early Warning System – Monthly Bulletin

DISASTER EARLY WARNINGS AND OUTLOOK - 15th JUNE - 15th JULY 2020

BIOLOGICAL HAZARDS

The Ministry of Health continues to appeal to the general public to remain vigilant and practice safety measures. Several measures to curb the spread of COVID-19 have been released, but unfortunately, the numbers of positive cases continue to increase.

Avoid close contact with people who are visibly sick with a cold or flu-like symptoms (fever, cough, sneezing). | Avoid touching your eyes, nose, and mouth with unwashed hands | Wash your hands often with soap and running water for at least 20 seconds. | If soap and water are not available, use an alcohol-based hand sanitizer | Stay home when you experience the above symptoms to avoid spreading illness to others. | Cover your mouth and nose when you cough or sneeze with a tissue, then throw the tissue in the dustbin and wash your hands thoroughly with soap and running water. | Wear a medical mask if you are sick, or if someone around you is sick. | Regularly clean and disinfect frequently touched objects and surfaces such as door handles.

If you feel **any of these signs and symptoms (fever, running nose (flu), cough, general weakness, difficulty in breathing or if the patient develops pneumonia)**, call our toll-free lines on **0800-100- 066** or **0800-203-033** to report any suspected cases of COVID-19.

Alert Level: **Moderate** → **High**

HYDRO-METEREOLOGICAL HAZARD - FLOODS

Flash floods are expected in Teso sub region, Elegu border in Amuru district and Karamoja subregion. Continued rise water levels in Lakes Victoria, Kyoga and Albert, due to the continuous rains, is likely to cause flooding along lakeshores and in low lands. For these low lying areas , regular monitoring by the authorities, and issuing an early warning to residents is required. On the other hand, we advise residents to remain vigilant, and for those who live very close to the shorelines, move to a safe area.

Village, Sub county and District Disaster Management committees are advised to update their contingency plans , report any emerging incident associated with weather and climate hazards immediately to the concerned authorities and to the Office of the Prime Minister on a toll free line of **National Emergency Coordination and Operations Centre, 0800177777**

Alert Level: **Moderate** → **High**

METEREOLOGICAL HAZARDS

Gusty winds and lightning strikes are expected on Lakes Victoria, Kyoga and Albert. Hence contingency measures should be put in place to avoid loss of lives and property.

Alert Level: **Moderate** → **High**

GEOPHYSICAL HAZARDS - LANDSLIDES

Over Elgon sub region, landslides /mudslides are expected, and we strongly advise people who live on the hills and steep slopes to be vigilant and cautious.

Alert Level: **Moderate** → **High**

TRANSPORT TECHNOLOGICAL HAZARDS

Transport Accidents: Any Location

Fire: Any Location

Electrocution: Any Location

Alert Level: **Moderate** → **High**

Disaster statistics for the month of April 2020

BIOLOGICAL HAZARDS (based on Weekly EPI Bulletins by MoH)

A high number of cases of Malaria, Typhoid fever, Animal bites, and SARI were reported in different parts of the country.

Reported cases: Malaria	(48004)	Dead: (39)
Typhoid fever	(619)	(1138)
Animal bites	(144)	(0)
SARI	(264)	(0)

Source: EPI, MoH, April 2020

TRANSPORT/ TECHNOLOGICAL HAZARDS

Fire, drowning, fatal road accidents occurred across the country.

Deaths: 63 Injured: 25 Affected: 371

Source: NECOC/OPM, Uganda Police Force, April, 2020

Floods, landslide and hailstorms update (March to end of May 2020)

HYDRO-METEREOLOGICAL

Floods reported in: Over 60 Districts

No of People approximately: Affected: 175,850 Displaced: 28,628

Hailstorms reported in: Rwampara, Luwero, Kanungu, Rukungiri, Kamuli, Nakapiripirit, Rubirizi, Ibanda and Kiruhura.

No of People approximately: Affected: 26,216 Displaced: 1,685

Source: NECOC/OPM, and Partners - May 2020

GEOPHYSICAL HAZARD

Landslide | reported in Ntoroko, Isingiro, Kabale, Kween. No of People approximately: Affected: 39,990 Displaced: 7,370

Source: NECOC/OPM, and Partners - May 2020



U - NIEWS

Uganda National Integrated Early Warning System – Monthly Bulletin

BRIEF UPDATE ON FOOD SECURITY AND MARKET PRICES OF SELECTED CROPS



In recent months, the restrictive measures introduced to contain the spread of the COVID-19 outbreak, have resulted in reduced agricultural labour demand, caused by declining purchasing power and disposable income for farmers that employ hired labour. In most bi-modal rainfall areas, where food insecurity is normally at minimal levels, the recent decline of incomes for agricultural workers caused by the reduced labour demand did not have a significant impact on the food security situation. By contrast, in the areas affected by the floods and landslides during the last two rainy seasons, the poor households are currently facing IPC Phase 2: “Stressed” food security conditions. This is due to the cumulative impact of reduced incomes caused by the restrictive measures and by the disruption of agricultural activities caused by flooding and of flood-induced losses of crops, livestock, and productive assets.

As of 04-June-2020, Global Information and Early Warning System (GIEWS) available on FAO website (<http://www.fao.org/giews/countrybrief/country.jsp?code=UGA>) considered the food security situation in the urban areas of the country as the most affected by the restrictive measures. The poor households that mainly rely on the daily wages obtained through casual labour, petty trading, food vending, construction activities and domestic work registered a sharp decline in incomes, further aggravating the situation were the increasing food prices.

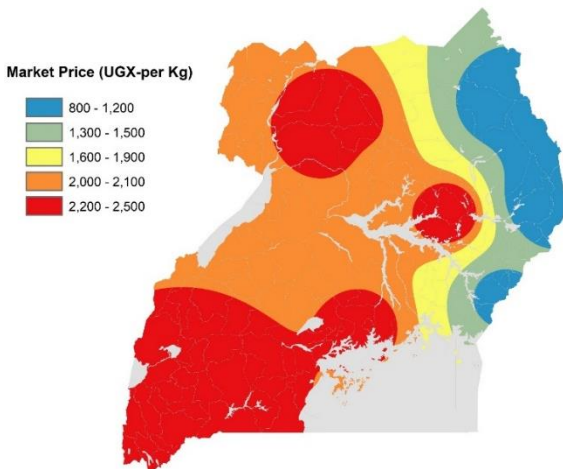
Update for 13 urban areas conducted between 5th May and 7th June 2020 by WFP, overall, 1 in 10 households (11%) in the 13 urban areas had poor or borderline food consumption in May 2020. The towns of Jinja, Mbale, Gulu, Lira, Mukono have the highest proportion of households with poor and borderline food consumption.

Approximately 4 of every 10 households (44%) were employing medium and high food-based coping strategies. About 4 in 10 households (37%) are employing crisis and emergency livelihood coping strategies to meet their food requirements and their essential needs.

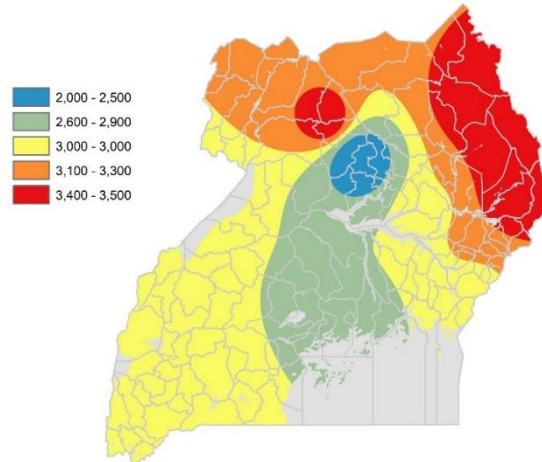
These coping strategies are negative, erode assets and wealth and undermine the sustained and long-term ability of households to meet their food security needs and other essential requirements. Female-headed households in comparison to their male counterparts had worse food consumption outcomes and had increased use of negative food-based consumption strategies. In terms of absolute numbers, Wakiso, Kampala, Mukono and Arua have the most people with poor and borderline food consumption.

In Kampala, Rubaga, Makindye and Kawempe have the highest proportion of households with poor and borderline food consumption ver 9 in 10 households (92%) reported that their livelihoods have significantly been affected by COVID 19. Consequently, about 6 in 10 Households (59%) reported having little or no access to food markets due to restricted

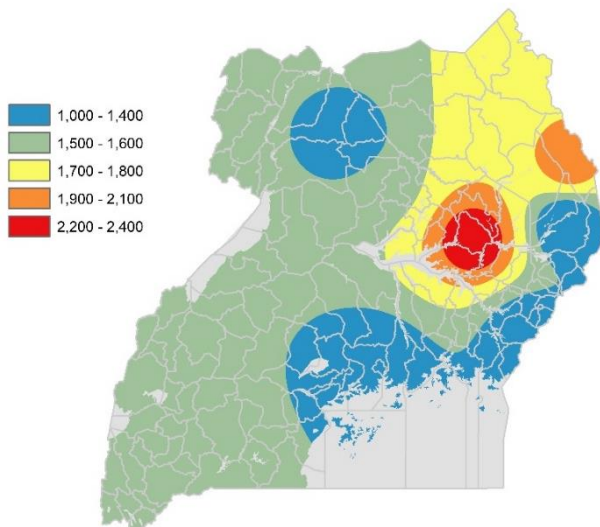
Spatial distribution of Market price of Sorghum — March 2020



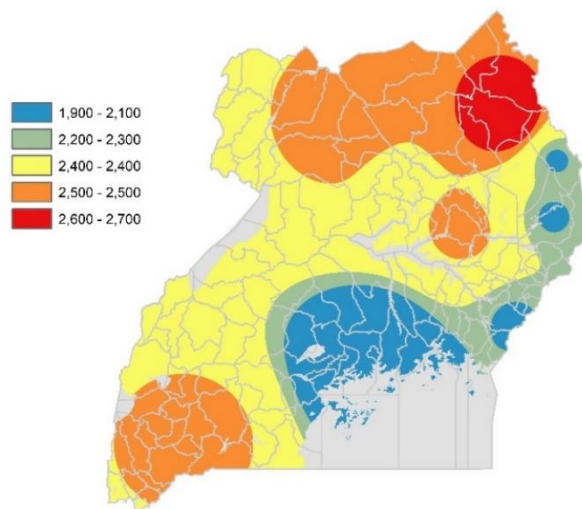
Spatial distribution of Market price of Millet Flour— March



Spatial distribution of Market price of Cassava Flour — March 2020



Spatial distribution of Market price of Maize flour — March 2020





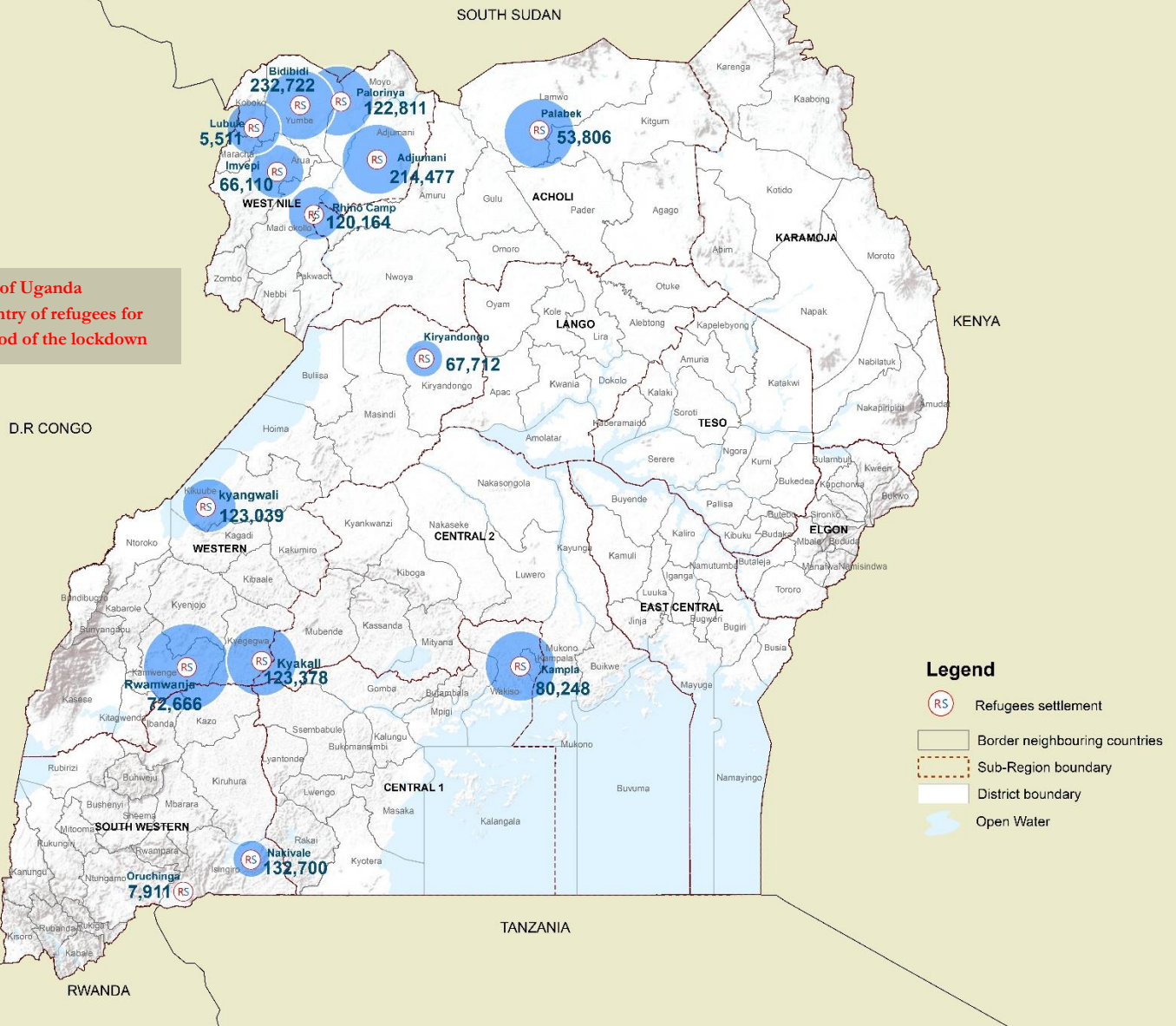
U - NIEWS

Uganda National Integrated Early Warning System – Monthly Bulletin

REFUGEE STATUS OF UGANDA (as of MAY 31st 2020)



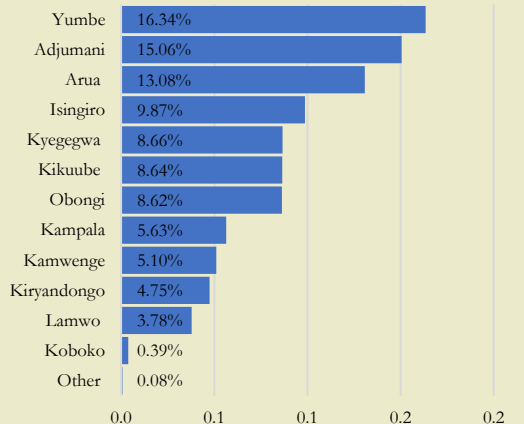
Government of Uganda suspended entry of refugees for the time period of the lockdown



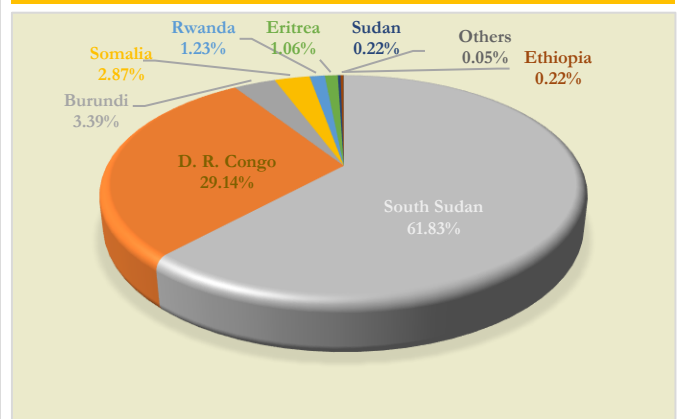
Data Source: UNHCR April 2020

Total refugees and asylum-seekers**

1,424,373



Refugees by country of origin





U – NIEWS

Uganda National Integrated Early Warning System – Monthly Bulletin

National Emergency Coordination and Operations Centre (NECOC)

The Office of the Prime Minister’s Department for Disaster Preparedness and Management established the National Emergency Coordination and Operations Centre (NECOC) in October 2014, with the support of United Nations Development Programme (UNDP). Uganda's National Emergency Coordination and Operations Centre (NECOC) is a 24 hour, 7- days a week central facility for early warning dissemination and coordination of emergency and crisis response and recovery action. The NECOC is established under the National Policy for Disaster Preparedness and Management of Uganda (NPDPM) with the purpose of contributing towards the functionality and characteristics that make creation of an integrated and multi-sectoral system approach to planning, preparedness and management of disasters that is fundamental to sustained productivity and socio-economic growth of the country.

Important Note!

The Uganda National Integrated Multi Hazard Early Warning System (U-NIEWS)

U-NIEWS monthly bulletin can be used to understand the conditions of crops and pasture, food insecurity, weather/climate forecast and to determine the anticipated disasters which may occur in the days to come while providing the disaster and humanitarian response status update based on monthly statistics. The information in this bulletin can be used as baseline information for planning processes while detail information may required for respective locations through relevant local and technical agencies for local level planning. For any specific details and information, relevant sources should be contacted using the NECOC website given below. In addition, Sub national level officials are encouraged to re circulate U-NIEWS among the locals including CSO’s in their respective districts. The development partners are also encouraged to re circulate this bulletin among their partners, peers and colleagues.

The information provided here is shared by the respective government, UN agencies and non-governmental agencies stationed in Uganda. The Uganda National Integrated Early Warning monthly bulletin is issued on the 15th of every month to notify Ministries, Departments, Authorities, UN Agencies and General public on probable disasters which may occur without warning.

For more details:

Office of the Prime Minister (OPM)

National Emergency Coordination and Operations Centre (NECOC)

5th Floor, Postel Building, Clement Hill Road

P.O Box 341, Kampala Uganda.

Tel No. 0414 342 104

Toll Free Hotline on all Networks:

: **0800 177 777**



*Photo:
Flood impact in Kasese district*

